

Winter 2010

The Four Seasons



Hardin County Extension Service Horticulture Newsletter

Hardin County Extension Office
201 Peterson Drive
Elizabethtown, KY 42701
(270) 765-4121

www.hardinhort.org

Volume 15, Issue 1

New Plants for a New Year

Every year I host a class for the Master Gardeners that gathers a list of new-to-the-public or little utilized plants. I try to find new plants that will grow in this area. Sometimes I'm successful, but I ALWAYS state at the beginning of the class that "I have not grown these plants. All the descriptions are from the catalogs and advertisements, so Buyer Beware!"

There are a group of plants that this does not apply. The Kentucky Theodore Klein Plant Awards are plants specifically picked because they thrive in this climate.

Plants are selected based on the following criteria. They must be able to: be efficiently propagated and produced; be found established in Kentucky and at least two good examples of the plant be established within driving distance of a majority of the Kentucky population; and be pest resistant.

***Cornus florida* 'Appalachian Spring'** **(Appalachian Spring Dogwood)** (below)

What Kentucky garden would be complete without at least one of our native flowering dogwoods? 'Appalachian Spring' is a new selection that was introduced as the most disease-resistant cultivar on the market today. Classic white spring blooms, bright red fall fruit and red/orange fall foliage combine to make the perfect package. Plant in rich, moist soil in partial shade.

***Pinus bungeana* (Lacebark Pine)**

This exquisite Japanese species offers fine evergreen texture on an upright oval form to 20-30' tall. The usually multi-trunked plants offer stunning exfoliating bark of deep green, cream, copper and olive. This is an excellent specimen plant for full sun or partial shade in rich, moist soils.

***Chionanthus retusus* (Chinese**

Fringetree)

Chionanthus retusus is a large shrub/small tree that is prized for its glossy green leaves, fragrant white flowers in late spring and its cultural adaptability. It is amazing in flower in a given season you cannot see the foliage for all the flowers that form at the end of the new shoots.

***Dryopteris x australis* (Dixie Wood Fern)**

It was selected because of its outstanding upright 3-4+ foot tall foliage that is considered tough and adaptable by those that grow it in Kentucky.

***Euphorbia amygdaloides* var. *robbieae* (Robb's Euphorbia)**

The perfect groundcover for dry shade, this plant produces a dense carpet of deep green, slightly glossy foliage that remains on the 12"-tall stems throughout the winter. This highly pest resistant species spreads slowly in dry conditions. Small chartreuse spring flowers add a bright touch in spring.

You can see more pictures at <http://www.ca.uky.edu/HLA/Dunwell/TKleinPA.html#2010>



Inside this issue:

Master Gardener Training Classes	2
Houseplants Need Light	2
2010 Perennial of the Year	3
Soil Test Coupon	3
A Bit of Spring	4
A Different Kind of Busy	4
Gardener's Toolbox Classes	5

Master Gardener Class to Commence this Fall

The dates are set. The time is right. All we need is people! The 2010 Class of the Kentucky Master Gardener Program is ready to start on September 9 at 9 a.m. at the Hardin County Extension Office.

Classes will continue on:

☼September 18*, 22, 29,

☼October 6. 9*, 20 27,

☼November 3, 11, 17

☼December 1 and 9.

Class times are 9 a.m. to 12 noon on week days and 9 a.m. to 3 p.m. on Saturdays. The Saturday classes are marked with a *.

The Master Gardener Program is designed to expand horticultural knowledge among the community through the use of trained volunteers.

Your decision to enroll in the program should be based on a commitment to help others in horticulture.

You are asked to participate in a 40-hour internship to Cooperative Extension Service programs in return for the training.



COOPERATIVE
EXTENSION

UK K&SU

UNIVERSITY OF KENTUCKY
College of Agriculture

KENTUCKY STATE UNIVERSITY

What are you going to do and learn? A little bit of a lot of different subjects.

We'll start off with a little history of the Extension Service and how Master Gardeners fit in to this almost 100 year institution. Then, we will delve into the "hard core" science classes: Botany, Soils, Plant Diseases, and Insects. Do NOT let this list scare you. These classes are the basis for all the "fun" classes like Woody Plants, Flowers, Fruits, Vegetable Gardening, Turf Care and Propagation.

You will receive a huge Master Gardener Handbook and lots of other resource information. So much so that we ask that

you purchase another 3" binder to put it all in!

There is a supply fee of \$100 to cover cost of resource material. I try to keep the cost low so more people can participate.

I am looking forward to working with a whole new group of Master Gardener Trainees. If you are interested, please contact the office.

Houseplants Need Light

Many houseplants tend to suffer over the winter due to poor light, dry air and too much water.

Here are some tips to remedy the situation:

Relocate houseplants to south facing windows to maximize their exposure to

sunlight.

If plants have been growing in extremely poor light, such as near a north facing window, move them gradually into brighter light to avoid burning the foliage. Realize that plants near a window pane may suffer on cold nights since the glass may not be well insulated and foliage touching or very near the window may be exposed to freezing temperatures. This is

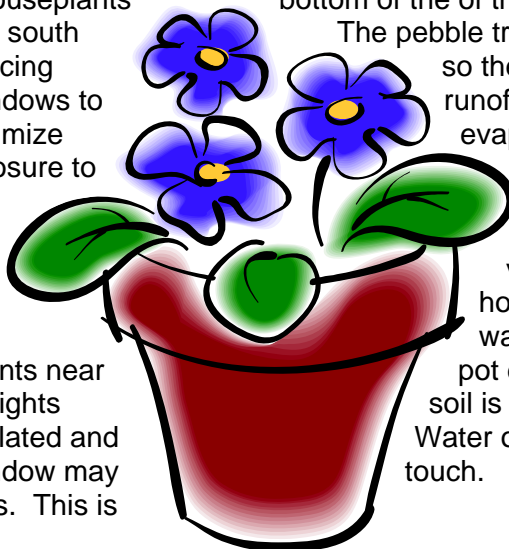
less of a problem with windows that have double-paned glass.

To increase the humidity around the plants, try placing them on pebble-filled trays where the water level is just below the bottom of the of the pots.



The pebble tray can serve as a drainage catch so the plants won't sit in water and the runoff will increase the humidity as it evaporates.

Bear in mind that houseplants require less water in the winter because they are not growing as vigorously. Always check houseplants for moisture before watering by sticking a finger into the pot down to the first knuckle. If the soil is moist or cool: wait another day. Water only when the soil is dry to the touch.



Perennial Plant of the Year!

The Perennial Plant Association has awarded the title of Perennial Plant of the Year® to *Baptisia australis*. This prairie perennial is a member of the Papilionaceae family. The species is native to the central Plains of North America. The flowers were used as a blue dye as a substitute for indigo, giving the plant the common name of Wild False Indigo.

This plant tolerates warm (hot) temperatures and partial shade. The plants grow best in deep rich soils, although they will tolerate poorer soils.

Vital Statistics:

- * USDA Zones 3-9
- * 3-4 feet tall, four feet wide
- * Full sun, will tolerate some shade



* Prefers moist, humus-rich, well-drained soil, grows well in heavier soils.

This long-season, long-lived perennial may be used as a specimen in the perennial border, a summer hedge, or in the cut flower garden.

The flowers are excellent in large bouquets, the pea-like leaves also hold up well in a vase. The seeds will mature to a dark blackish-blue and rattle in the wind.

To propagate from seed, harvest the seed as they turn black and sow when fresh. Scarify the seed by scraping the seeds with sandpaper to help the seed take in water. Sow the seed and place in a warm, humid environment. Plant in the soil when the plants have 3-5 true leaves.

COOPERATIVE
EXTENSION
SERVICE

UK

UNIVERSITY OF KENTUCKY
College of Agriculture

Soil Test Coupon

Redeemable for a free soil test* at the
Hardin County Cooperative Extension Service.

This includes soil tests for:
lawns, trees, shrubs, flower beds, fruit trees, and vegetable
gardens.

Sample must be taken according to the UK Soil Sampling Guidelines and
returned to the Hardin County Extension Office.

Manufacture coupon: No Expiration Date

*Must be a resident or landowner of Hardin County.

A Bit of Spring By Angela Jenkins

When sunshine gets lost behind the snow clouds of winter, gardeners need to know spring is not far away. For a sneak preview of spring, try creating a terrarium.

A terrarium is an enclosed container, usually made of glass. Inside, a few small plants, even some that bloom, create a bit of spring. The tropical effect can last for months.

Supplies to make a terrarium are simple and easily available.

1. Glass fish bowl, brandy snifter, large bottle, etc. with glass cover.
2. Charcoal to make 1/2" layer in bottom of container.
3. Potting soil for 1-1/2" layer over charcoal.
4. Selection of plants.
5. Decorative items, rocks, colored marbles, tiny statues, etc.
6. Moss.

Begin with a clean container. Rinse with a 1 part chlorine to 5 parts water solution. Let container air dry for at least 24 hours.

Cover the bottom of the container with a 1/2" layer of charcoal. This helps avoid bacterial growth. Add a layer of potting soil. Then set plants in place in the miniature landscape. Long tweezers are helpful in placing plants. The final layer is moss. This can be collected from outdoors or purchased at a florist as 'sheet moss'. Add decorations. Water sparingly. Place in bright but not direct sunlight. If you can read by the light, it is just right.

To enhance the illusion of

'landscape', make sure any figurines or decorative items are in the proper scale with the plantings.

Slow growing plants or ones with small foliage are the best selections for terrariums. Ask your florist about other options. Plants that grow faster will fill the container more quickly and require trimming to keep them in proportion to the size of the container.

The following are good choices.

- Table palm
- African Violet
- Small dracaena
- Johnny jump-ups (violas)
- Aluminum Plant (Pilea)
- Nerve Plant (Fittonia)
- Small ferns
- Wondering Jew (aggressive, but pretty)

Enclosed container gardens can survive for days or weeks without attention. The reason for this is that plants give off moisture which condenses on the glass. The moisture falls back to the moss, and the plant absorbs it again to continue the cycle. As long as condensation forms inside the container, watering is not needed.

Two cautions: don't over plant your terrarium. Give the plants room to grow. Don't fertilize. After all, the idea is to keep plants suitable for the size of your terrarium. Fertilizer will make them grow.

If trouble does arise, such as mold or rot, remove everything and wash the container with the chlorine solution again. Discard any diseased plants. Turn your imagination on and rebuild your terrarium again in a whole new design.



A Different Kind of Busy

Every time I write a newsletter, I reflect on what has happened at this time in years past. This year, I see almost fifteen years of working at the Hardin County Extension Office. This was supposed to be a temporary job. Oh, well! I think I am charmed and challenged by the work here. There is no 'typical day' here at the office.

Although the clients (you) haven't been calling and dropping by with plant problems and questions, we are still working at a break-neck pace to plan programs and activities for the spring. It's a different kind of busy.

Things are quiet on the surface, but things are hopping underneath. The 2010 Gardeners' Toolbox Series is ready to start in March; and plans are talking shape for the Plant Fair in May.

Looking forward to spring,

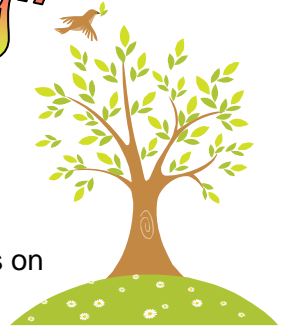
A handwritten signature in black ink that reads "Amy Adenderfer". The signature is written in a cursive, flowing style.

Amy Adenderfer
County Extension Agent for Horticulture



Gardeners Toolbox Spring 2010

"Spring Has Sprung" Arrangement



Tuesday, March 23 ✨ 6:00 pm ✨ Cost \$5.00

Build and take home a fresh arrangement after learning a few tips on how to incorporate spring flowers from your own gardens. All supplies are provided.

You must register and pay by the deadline, March 16, 2010.

Class will be held at the Hardin County Extension Office,
201 Peterson Drive. Elizabethtown, KY 42701 270-765-4121



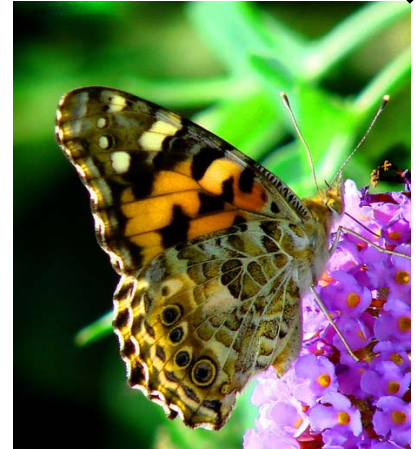
"Gardening for the Butterflies"

Tuesday, April 27 ✨ 6:00 pm ✨ Cost \$5.00

Learn to build a garden around the "Flying Flowers of Nature". Garden design, host and nectar plants and garden accessories will be shown and given as door prizes.

You must register and pay by the deadline, April 20, 2010.

Class will be held at the Hardin County Extension Office,
201 Peterson Drive. Elizabethtown, KY 42701 270-765-4121



"Let's Do Lunch - Edible Landscapes"

Tuesday, May 25 ✨ 6:00 pm ✨ Cost \$5.00

Gather information on how to grow your own food without having a formal vegetable garden or have to dedicate acres to an orchard. Start your garden with some of the "giveaway" plants and tools.

You must register and pay by the deadline, May 18, 2010.

Class will be held at the Hardin County Extension Office,
201 Peterson Drive. Elizabethtown, KY 42701 270-765-4121



Class will be held at the Hardin County Extension Office,
201 Peterson Drive, Elizabethtown, KY 42701

For registration call ☎ 270-765-4121 or go on-line, go to hardinext.org

Check out the updated website:

www.Hardinext.org



If you would like to receive
this newsletter via email,
please drop me a line:
Amy.Aldenderfer@uky.edu



NONPROFIT ORG
US POSTAGE PAID
ELIZABETHTOWN, KY
PERMIT 203

Cooperative Extension Service
University of Kentucky
Hardin County
201 Peterson Drive
Elizabethtown, KY 42701
Official Business

UK
UNIVERSITY OF
KENTUCKY
College of Agriculture

Return Service Requested